

BEFORE BEGINNING INSTALLATION, READ ALL INSTRUCTIONS

INSTALLATION INSTRUCTIONS

- 1- REMOVE THE EXISTING SUN VISOR, BUT REMAIN THE EXISTING BOLTED BRACKETS ONTO THE CAB.
- 2- IF THE MIRROR IS FIXED ON THE CAB, REMOVE THE MIRROR.
- 3- INSTALL THE SUPPLIED BRACKETS ONTO THE EXISTING BRACKETS ON THE CAB.
- 4- TEMPORARILY INSTALL THE SUN VISOR ONTO THE CAB.
- 5- USING THE SUN VISOR, MARK HOLES ON BOTH ENDS OF SUN VISOR (IF FACTORY SUN VISOR PREVIOUSLY INSTALL) SKIP TO STEP #7.

ATTENTION

REMOVE SUN VISOR TO PREVENT DAMAGE

- 6- DRILL THE PREVIOUSLY MARKED HOLES AT 1/2 IN. DIA.
- 7- INSERT THE WELLNUTS.
- 8- IF WITHOUT LIGHTS; SKIP TO STEP #12.
- 9- INSTALL THE LIGHTS ON SUN VISOR, CONNECT THE LIGHTS AND DIRECT WIRE TOWARDS CENTER.
- 10- INSTALL THE SUN VISOR ON THE CAB, AS ILLUSTRATED.

CAUTION

IT IS THE RESPONSIBILITY OF THE INSTALLER TO PLAN AHEAD THE ADEQUATE ELECTRICAL CONNECTION ACCORDING TO THE STANDARDS OF THE TRUCK MANUFACTURER AND DOT REGISTRATION.

- 11- CONNECT LIGHTS HARNESS TO THE TRUCK.
- 12- REINSTALL THE SUN VISOR ON THE CAB, AS ILLUSTRATED.
- 13- REINSTALL THE MIRROR IF PREVIOUSLY REMOVED AT STEP #2.
- 14- TIGHTEN ALL BOLTS AND SCREWS FIRMLY.



TRUX ACCESSORIES

TITLE:

SUN VISOR FREIGHT. METAL ROOF 1991 & UP
CLASSIC & CLASSIC XL & FLD 112-120

SIZE DWG. NO.

A **TSUN-F1 & F2**

NAME

DATE

REV

DATE

DRAWN BY P.W.

09/03/2006

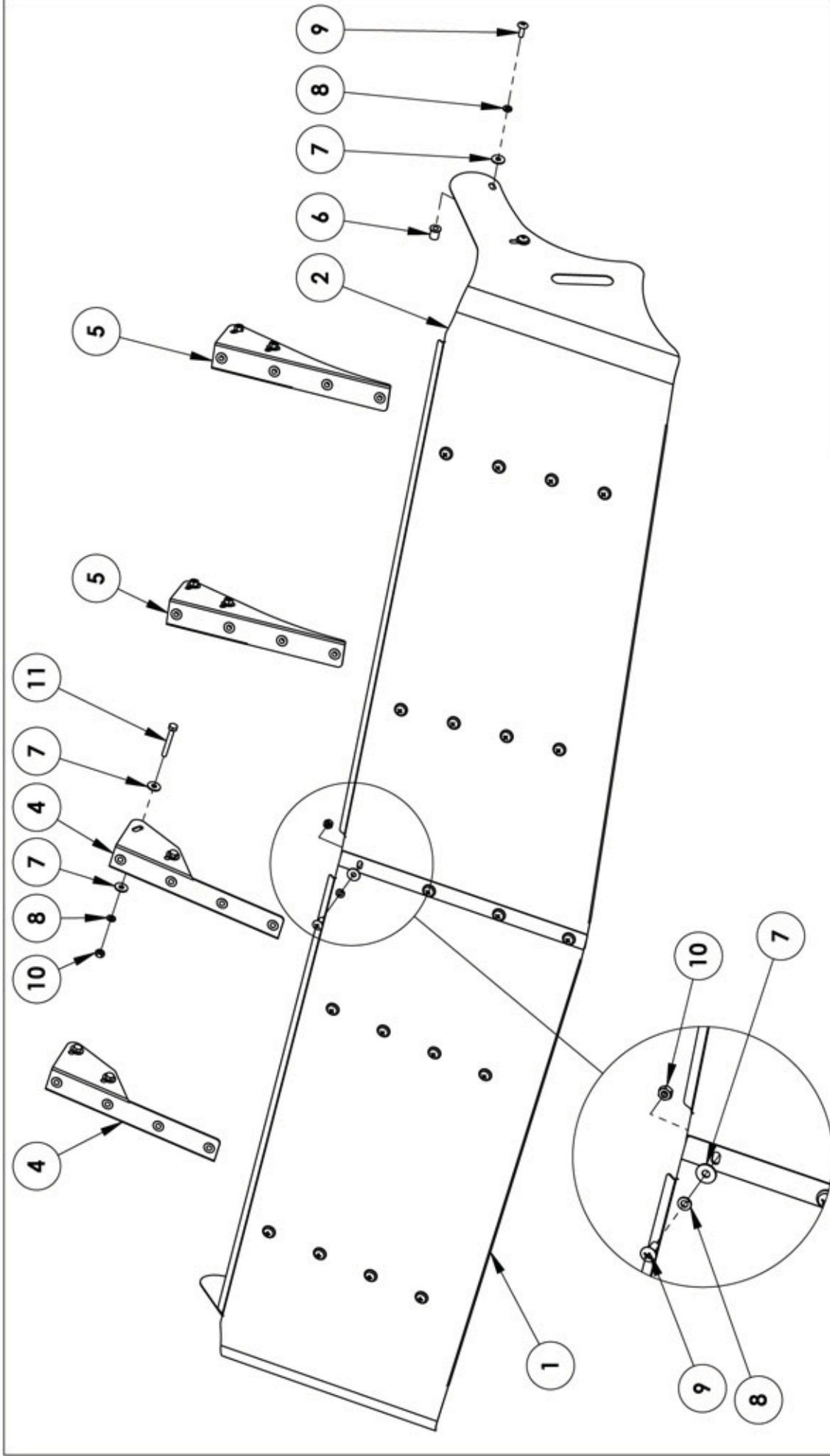
PH1

-

SCALE: 1:24

WEIGHT: LBS

SHEET: 1 OF 1



ITEM NO.	PART NO.	PART NO.	PART NO.	PART NO.	DESCRIPTION	QTY
1	M7331018SD	M7331019SD	M7331030SD	M7331039SD	SUN VISOR PANEL	1
2	M7331018SG	M7331019SG	M7331030SG	M7331039SG	SUN VISOR PANEL	1
3	K7331018BH	-	-	-	HARDWARE KIT INCLUDE:	-
4	-	-	-	-	PR9331018-D01	2
5	-	-	-	-	PR9331018-G01	2
6	-	-	-	-	WELL NUT 1/4NC	4
7	-	-	-	-	FLAT WASHER 1/4	40
8	-	-	-	-	LOCK WASHER 1/4" SS	32
9	-	-	-	-	TRUSS PHILIPS 1/4"-20NCX3/4"SS	24
10	-	-	-	-	HEX NUT 1/4-20NC	12
11	-	-	-	-	HEX. BOLT 1/4NC X 2	8

TRUX ACCESSORIES

TITLE:
 SUN VISOR FREIGHT. METAL ROOF 1991 & UP
 CLASSIC & CLASSIC XL & FLD 112-120

SCALE: 1:8
 DWG. NO. **A**
TSUN-F1 & F2

NAME	DATE	REV	DATE
P.W.	09/03/2006	PH1	-