

INSTALLATION INSTRUCTIONS

1. SET UP

- a. Arrange the *Glow Strip* sequence so that every male plug connects to every female plug along the chain. Confirm that the proper wire at the end of the sequence attaching to the truck's wire harness is the correct male or female plug.
- b. Clean the louvered areas of the stainless from all dust, debris, and fingerprints using a rag and any certified stainless cleaner.

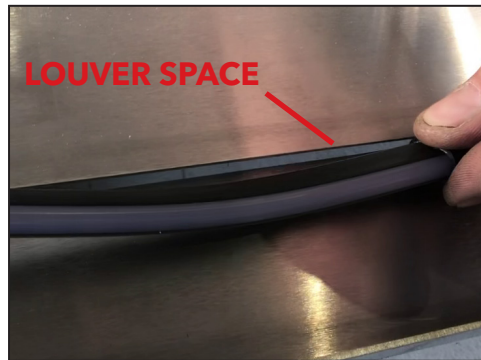
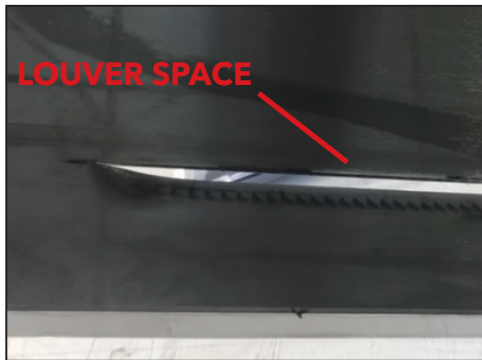


2. MOUNTING THE GLOW STRIP

- a. In this step, you will be wedging the side of the *Glow Strip* snugly into the louvered space. Remove the 3M Tape from the back of the *Glow Strip*.



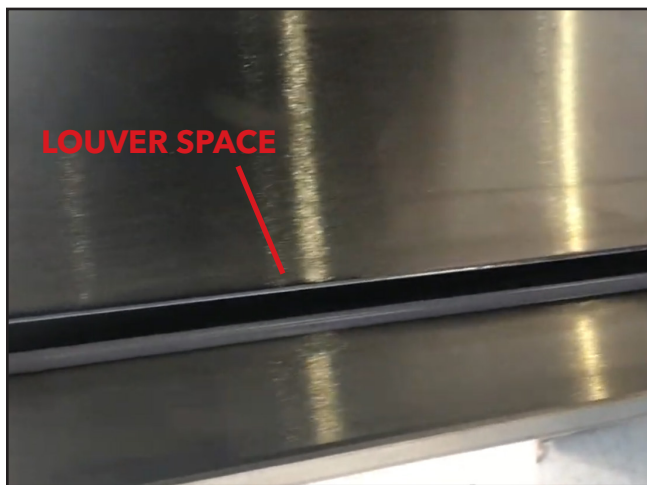
- b.** On the back side of the stainless piece, position the *Glow Strip* gently on the stainless surface along the louver.



- c.** Once in position, push the side glow surface directly into the louver space (as far as it will go.) The side glow surface should be as far into the louver space as possible. The more secure the glow strip is in the louver, the more secure it will be on the stainless.

NOTE: It is best to start on one side. Whilst moving the strip along, slowly wedge the *Glow Strip* into the louver.

- d.** Once it is evenly and snugly placed inside the louver space, press down to let the 3M Tape adhere to the stainless.



NOTE: There are 2 types of glow surfaces on the *Glow Strip* that will create 2 desired glow effects.

LOUVERED GLOW - the glow section in the Louver

BACK GLOW - the glow section on the opposite side that is exposed

Please see examples of the *LOUVERED GLOW* & *BACK GLOW* effects on next page.

LOUVERED GLOW ONLY

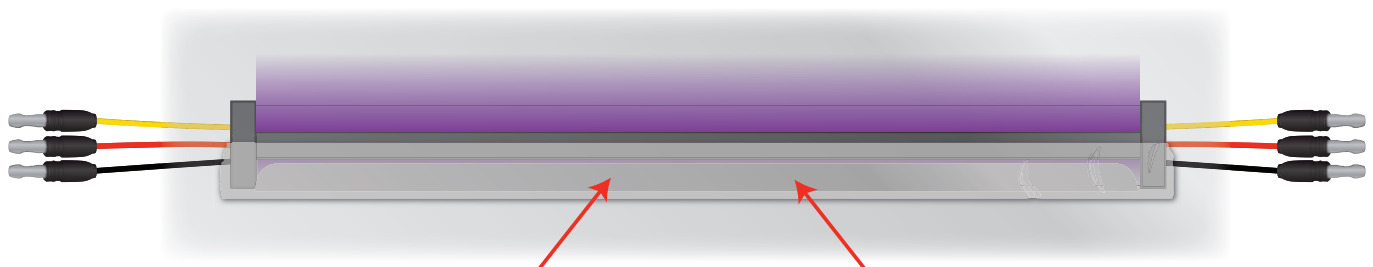


LOUVERED GLOW WITH BACK GLOW



3. TAPING THE GLOW STRIP

- a. Cut 1 strip of 2-inch Stainless Tape that measures the length of the *Glow Strip*.
- b. Place the Stainless Tape over the length of the LOUVERED GLOW section, the louver, and any other stainless surface it will reach to secure the *Glow Strip* into the louver. Try to cover as much of the *Glow Strip* and stainless surface area as possible to create a secure fit.



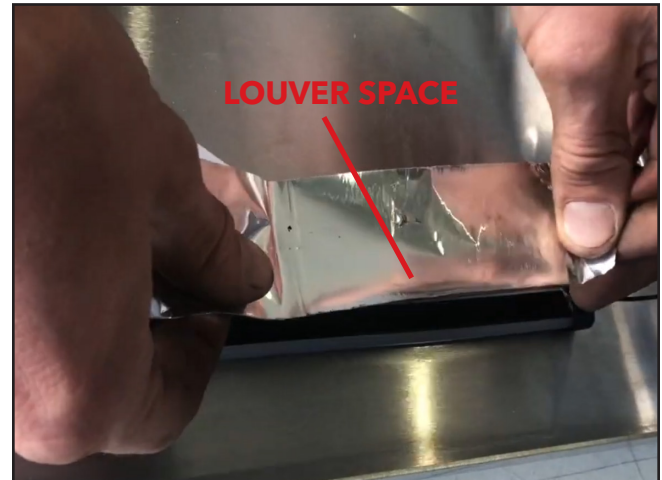
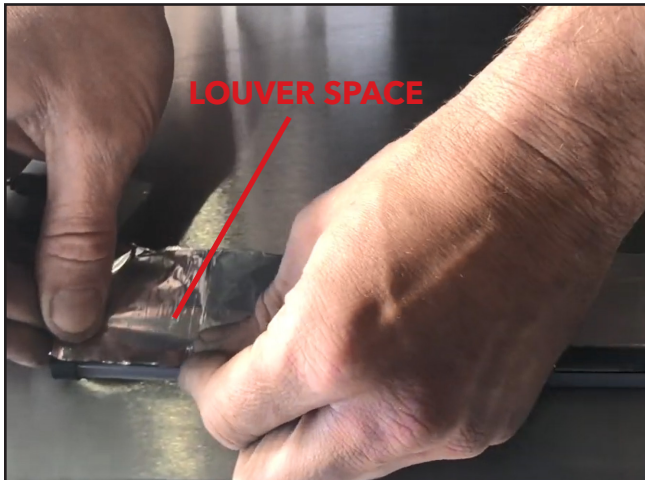
Strip of Stainless Tape the length of the LED Glow Strip & Louver

Louver Part on Stainless

- i. To maintain a smooth and even look, it is best to begin applying the Stainless Tape at one side of the Louver.

SLOWLY apply the tape along the length of the Louver while removing the tape seal as you go.

NOTE: Applying the tape SLOWLY will help prevent the tape from 'bunching' up.



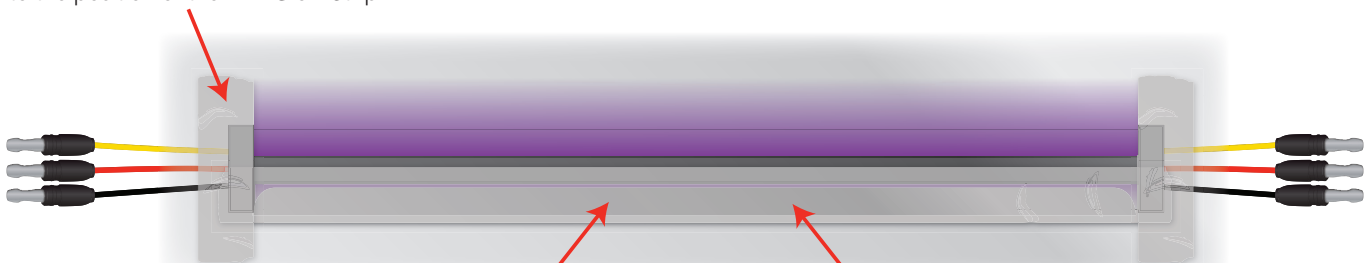
NOTE:

- If you want a 'BACK GLOW' effect, do not add more tape along the length of the *Glow Strip*.

- If you do NOT want a 'BACK GLOW' effect, place another piece of Stainless Tape along the length of the *Glow Strip* covering the 'BACK GLOW' and the stainless.

- c. For extra reinforcement, cut 2 pieces of 2" x 8" Stainless Tape and place them on opposite ends of the *Glow Strip* (perpendicular to the length). You will cover a small section of the 'BACK GLOW' by doing this, however, it will not be noticeable.

Strip of Stainless Tape perpendicular to the position of the LED Glow Strip



Strip of Stainless Tape the length of the LED Glow Strip & Louver

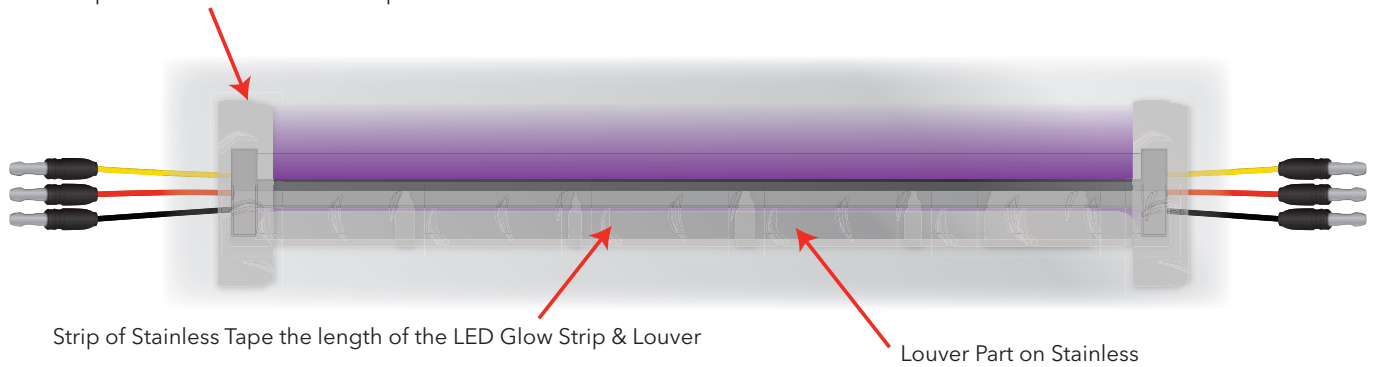
Louver Part on Stainless



d. Repeat the above steps for all other louvers and glow strips.
Below is an overview of the Tape Installation.

BACK GLOW

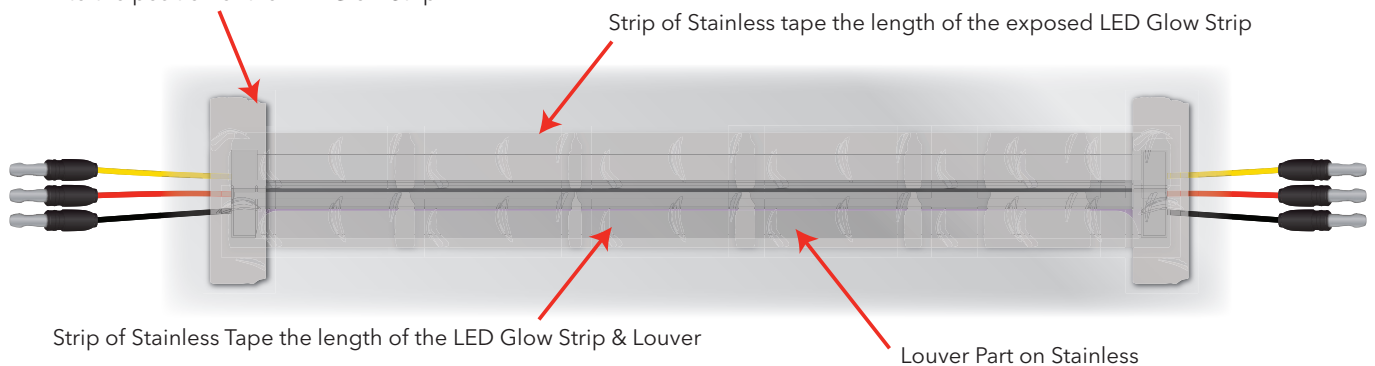
Strip of Stainless Tape perpendicular to the position of the LED Glow Strip



NO BACK GLOW

Strip of Stainless Tape perpendicular to the position of the LED Glow Strip

Strip of Stainless tape the length of the exposed LED Glow Strip



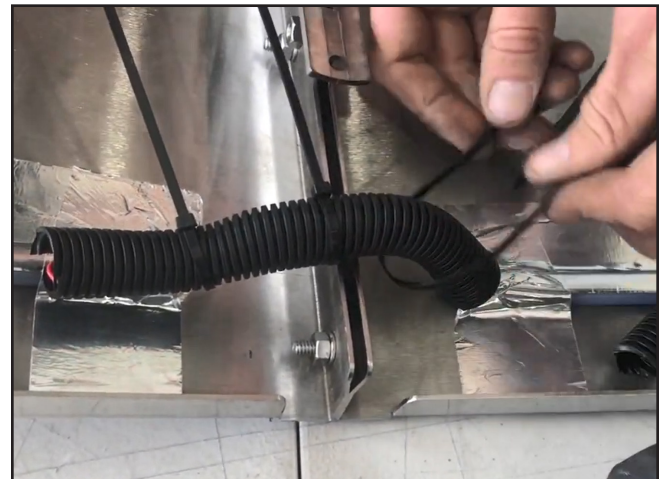
- e. Connect the Male and Female Bullet Plugs of all the *Glow Strips* in the sequence.
- f. Attach one end to the wire harness of the Truck.
- g. Test the light(s).

4. WIRING

- a. Add loom along all the wire connections to protect them from the elements.



- b. Add zip ties to the loom to seal it. (2-3 per loom).
- c. Close off the wiring on the other end that is not being used.



MOVE TO SUN VISOR/LIGHT BAR/SKIRTING PANEL INSTALLATION

Proceed with the Installation Instructions for the Louvered Stainless Item that is being installed on the Truck.



WATCH THE INSTALLATION VIDEO

The Installation Video can be viewed online on Trux's Youtube Channel.

<https://www.youtube.com/c/TruxAccessories>