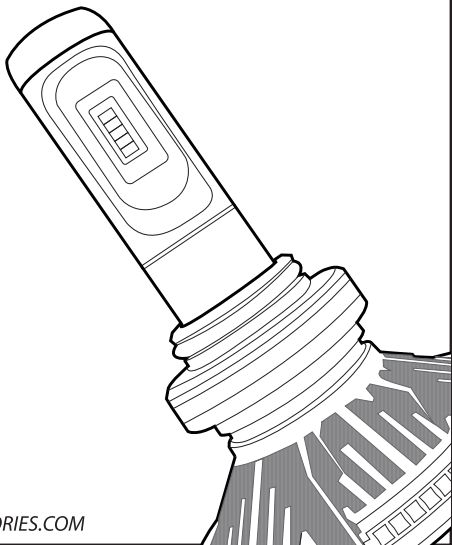




# LED BULB KIT

## INSTRUCTION MANUAL



[WWW.TRUXACCESSORIES.COM](http://WWW.TRUXACCESSORIES.COM)



## Instruction Manual for LED Bulb Kit

Thank you for purchasing Trux Accessories product. Follow instruction manual thoroughly for proper use of the product.

Check the bulb type before use. Do not mount or use the product for different application.

This product can be installed in lamps that use resin type sockets such as H4, H10, H11, H13, 9004, 9005, 9006 & 9007 bulbs. Before replacement, verify the indications on the bulb that is being replaced and make sure it is the right type.

On some vehicles (including imported models) a warning lamp may go on indicating that the bulb has burned out or some other type of abnormal indication may occur. This phenomenon is common to LED products. In addition, in order for the system to sense that a bulb has burned out, a minute amount of electric voltage continues to flow even when the switch is turned off. Therefore, please be aware beforehand that when the bulb is replaced, the LED bulb may light up slightly but this is not a product abnormality. The amount of voltage that is consumed when the LED lights up is minimal. The amount equal to what is used to power the vehicle's clock and will not lead to a sudden drop in battery power. The LEDs have a different luminescence process from H.I.D. or halogen bulbs, even if the light color is the same, it may look different when seen from a human eye. In addition, depending on the lamp setting, the light color may change. (Even when installing a bulb with the same color temperature as a headlamp and fog lamp, the color variation may vary.)

When this product is used in vehicles that have idling stop systems or have weak battery power, the light may fail to light up or may flicker when starting the engine.

If this product is installed and used in a lamp fitting that has deteriorated after extended use, the functional performance of this product may not have the originally intended effect. As a result, there is a possibility that it may not successfully pass the required automobile inspection. If this is the case, replace it with the old bulb.

## PRECAUTION FOR USE

### **WARNING**

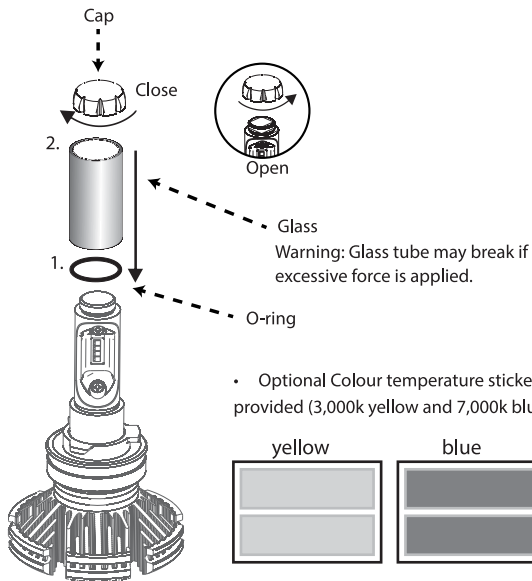
- Do not look directly at the operating lamp for any period of time, this may cause serious eye injury.
- If there is abnormal vibration or sound when the vehicle is in motion, immediately stop the vehicle in a safe location and inspect the vehicle.
- Please do not disassemble or modify the product. Such actions may damage the product or may cause fire and/or bodily injury.
- Keep the product out of reach of infants. Otherwise infants may swallow or break the product, leading to injury.

### **CAUTION**

- When this bulb/lamp is tuned on, there is a possibility that noise interference may influence the radio or other such devices. Please note that this is not a malfunction of any kind.
- During heavy rain or when putting the vehicle through a car wash, condensation may build up inside the lamp due to the difference in temperature inside and outside the lamp. Please note that this will not affect the overall function of the lamp.
- Do not leave the lamp on for an extended period of time while the vehicle is stopped.
- If bulb flickers when in DRL (daytime running light) or Low beam mode, a load resistor will be required.

## INSTALLATION

- Before starting the installation work, refer to the vehicle's installation manual and verify the place where the bulb will be installed and carry out the installation.
- Install O-ring and glass tube before connecting the LED bulb and controller.



Yellow  
(3,000K)



Blue  
(7,000)



## INSTALLATION

- Connect the LED bulb and controller.

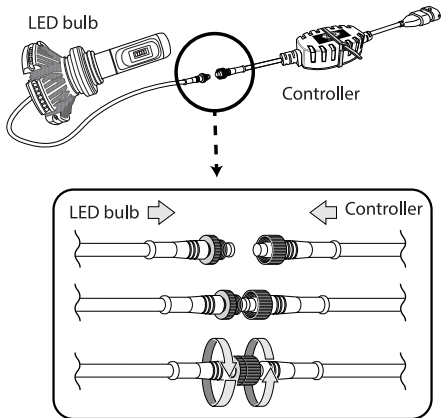
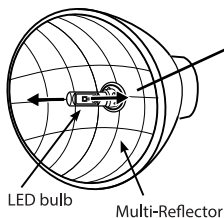


Figure 1

## BULB PLACEMENT



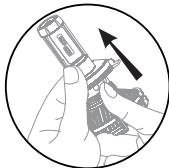
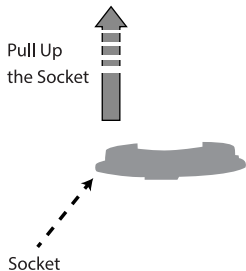
Front View Diagram

Beam Direction

Beam Direction

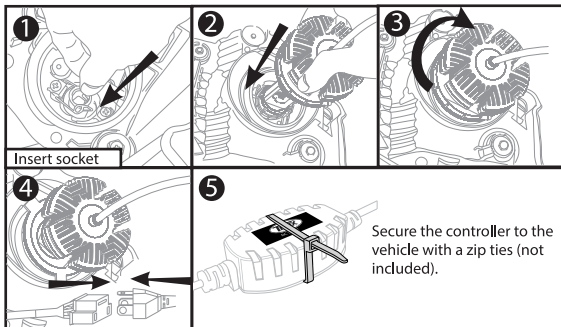
## BULBS FOR H4 & H7

To achieve bulb placement as shown in figure 1 (on some vehicles), bulb base can be adjusted. Gently turn the base to it's correct position.



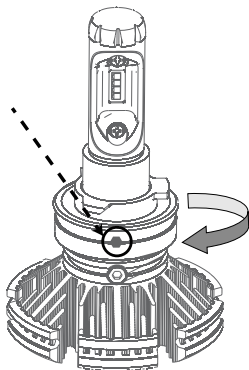
### CAUTION

- Do not forcibly pull the light-emitting part out or rotate it in excess of 180 degrees. This may cause the harness to break.



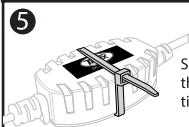
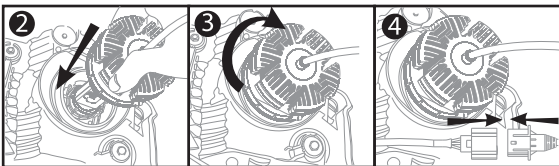
## BULBS FOR H11/ H13/ 9004/ 9005/ 9006/ 9007

To achieve bulb placement as shown in figure 1 (on some vehicles), bulb base can be adjusted. Use the provided allen key to loosen the small screw on the LED bulb. Once the screw is removed, gently turn the base to it's correct position and re-tighten the screw.



### **! CAUTION**

- When setting the bulb in place, if excess force is used to tighten the small screw, it may damage the screw and the bulb itself. Be very careful when tightening the screw.
- Do not forcibly pull the light-emitting part out or rotate it in excess of 180 degrees. This may cause the harness to break.



Secure the controller to the vehicle with a zip ties(not included).

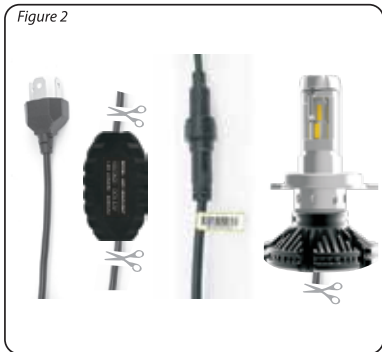
## WARRANTY SERVICE

How to dispose of a defective LED bulb after authorization.

### Defective LED Bulb

Please cut the wires as shown in figure 2.

Figure 2



### 3-Year Limited Warranty

Trux accessories warranty is the period of 3 years from the date of original retail purchase, this product will be free from defects in material and workmanship. Trux accessories, will replace this product or any component of the product found to be defective during the warranty period. Replacement will be made with a new product.

This warranty is valid for the original retail purchaser from the date of initial retail purchase and is not transferable. Keep the original sales receipt. Proof of purchase is required to obtain warranty. Retail stores selling Trux accessories products do not have the right to alter, modify or in any way change the terms and conditions of this warranty.

You can return the product back to the place of purchase or visit our website, [www.truxaccessories.com](http://www.truxaccessories.com) or calling 1-888-950-2227 and have our customer service help you



**FOR OUR FULL LINE,  
VISIT OUR WEBSITE**  
[WWW.TRUXACCESSORIES.COM](http://WWW.TRUXACCESSORIES.COM)

